

ITBS SCM

MANAGING EVERY ASPECT OF MATERIAL ACTIVITY



ITBS SCM is a powerful web enabled inventory and tracking solution for managing every aspect of material requisitions, procurement, receipt & storage and maintenance requirements.

Utilizes Auto ID Data Capture (AIDC) technology, such as barcode scanners, mobile computers, wireless LANs and potentially Radio-frequency identification (RFID) to efficiently monitor the flow of products. Once data has been collected, there is either batch synchronization with, or a real-time wireless transmission to the central database. The database can then provide useful reports about the status of goods in the warehouse.

Provides a set of computerized procedures to handle the receipt of stock and returns into a warehouse facility, model and manage the logical representation of the physical storage facilities (e.g. racking etc), manage the stock within the facility and enable a seamless link to order processing and logistics management in order to pick, pack and ship product out of the facility.

- ≡ Procurement
- ≡ Inventory management
- ≡ Specifications management
- ≡ Maintenance management
- ≡ Reservations & planning
- ≡ Analytics & administration
- ≡ Interfacing with financial systems

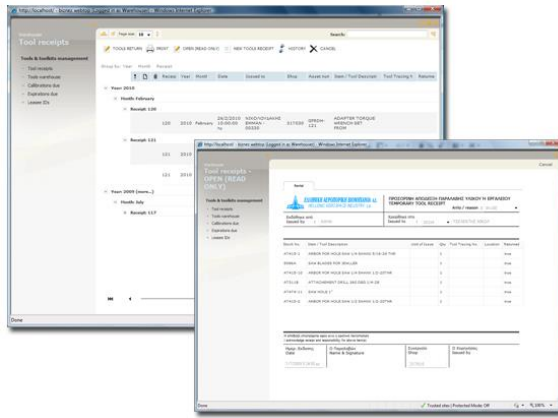
Deals with receipt, storage and movement of goods, normally finished goods, to intermediate storage locations or to final customer; In a multi-echelon model for distribution, there are levels of warehouses, starting with the Central Warehouse(s), regional warehouses services by the central warehouses and retail warehouses at the third level services by the regional warehouses and so on. The objective is to help in optimal cost of timely order fulfillment by managing the resources economically.

Reduces carrying costs when used to track products and parts as they are transported from a vendor to a warehouse, between warehouses, and finally to a retail location or directly to a customer.

Is used for a variety of purposes, including:

- Maintaining a balance between too much and too little inventory.
- Tracking inventory as it is transported between locations.

Features and Benefits

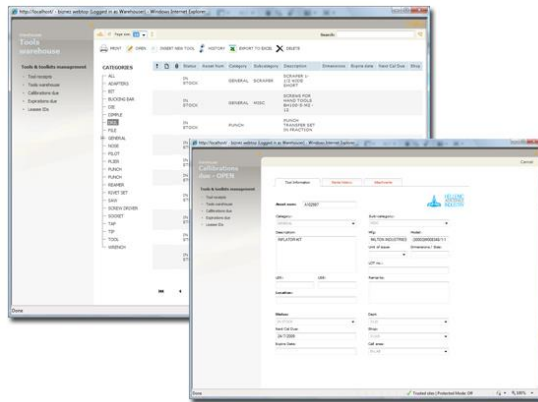


- Receiving items into a warehouse or other location.
- Picking, packing and shipping items from a warehouse.
- Keeping track of product sales and inventory levels.
- Cutting down on product obsolescence and spoilage.

ITBS SCM **assists** the creation of work orders and bills of materials. This facilitates the manufacturing process by helping manufacturers efficiently assemble the tools and parts they need to perform specific tasks. For more-complex manufacturing jobs, manufacturers can create multilevel work orders and bills of materials, which have a timeline of processes that need to happen in the proper order to build a final product.

Cost savings

ITBS SCM helps companies cut expenses by minimizing the amount of unnecessary parts and products in storage. Companies keep lost sales to a minimum by having enough stock on hand to meet demand.



Warehouse organization

ITBS SCM helps distributors, wholesalers, manufacturers and retailers optimize their warehouses. Business analytics identify the most popular products that can be grouped together or placed near the delivery area to speed up the process of picking, packing and shipping to customers.

Updated data

Up-to-date data on inventory conditions and levels gives definitely advantage to companies. Executives can access ITBS SCM from anywhere in the web to check current inventory numbers.

Empowering employees

With the aid of restricted user rights, company managers can allow many employees to assist in inventory management. They can grant employees enough information access to receive products, make orders, transfer products and do other tasks without compromising company security.